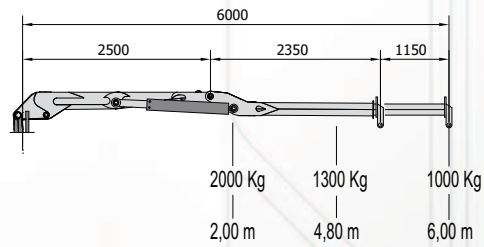
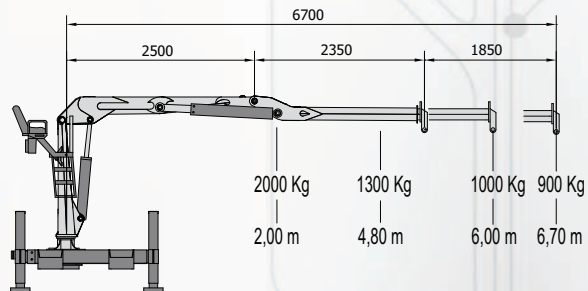


IB 6600

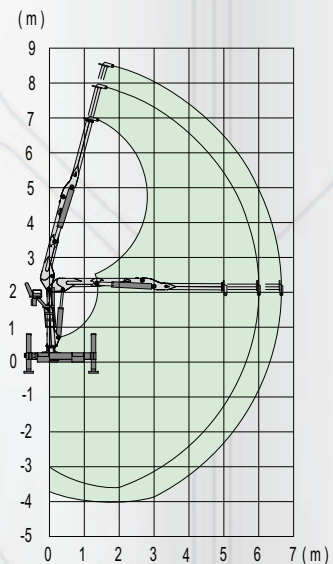
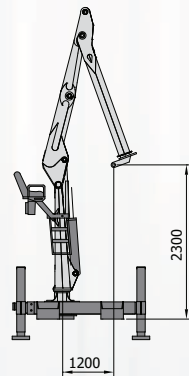
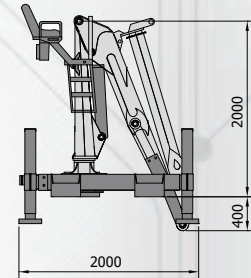
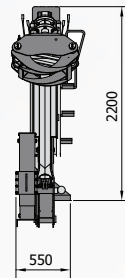




IB6600.Z60



IB6600.Z67



TECHNISCHE DATEN / DONNÉES TECHNIQUES

	IB6600
Maximales moment / <i>Capacité de levage maximale</i>	62 KNm
Drehmoment (netto) / <i>Couple de rotation nette</i>	20 KNm
Drehwinkel / <i>Angle de rotation</i>	400°
Maximale reichweite / <i>Maximale extension du bras</i>	6,00 - 6,70 m
Betriebs-/arbeitsdruck / <i>Pression de service \ travail</i>	210 Bar
Empfohlene durchflussmenge der pumpe / <i>Débit recommandé pour la pompe</i>	50 lt/ 60 min
Lader-/krangewicht (ausschliesslich endausrüstungen) / <i>Poids du chargeur \ grue (exclus équipements d'extrémité).</i>	1250 Kg/6,00 m - 1350 Kg/6,70 m